

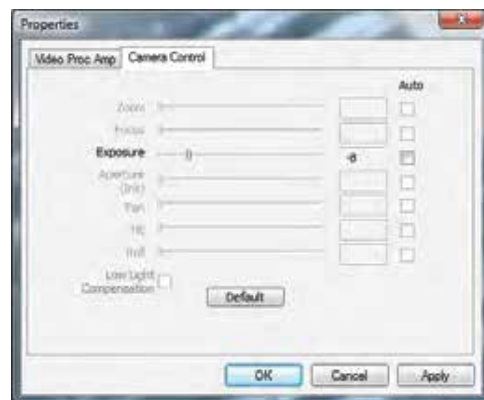
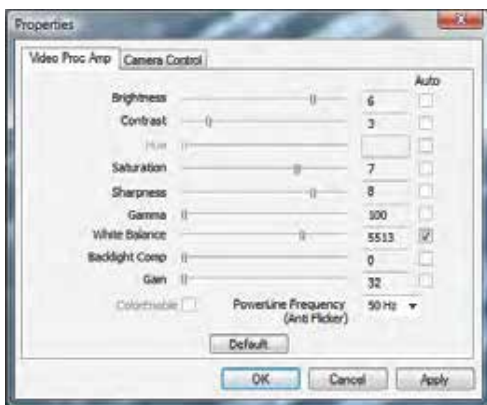
## Mantis Elite-Cam AMCap image capture guide

Date: 27 January 2010

The following has been written in order for sales staff to get the best possible image quality from a Mantis Elite-Cam for demo purposes. The most difficult subjects to capture tend to be highly reflective parts such as solder joints or machined components.

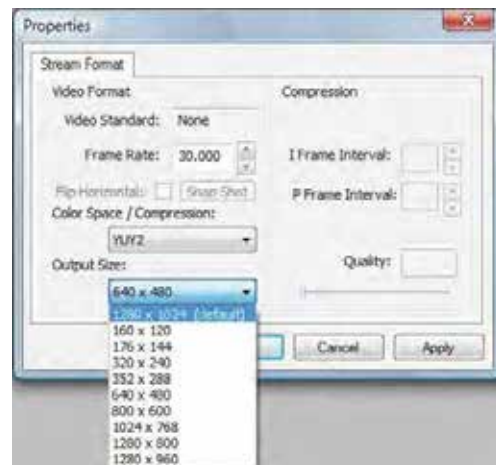
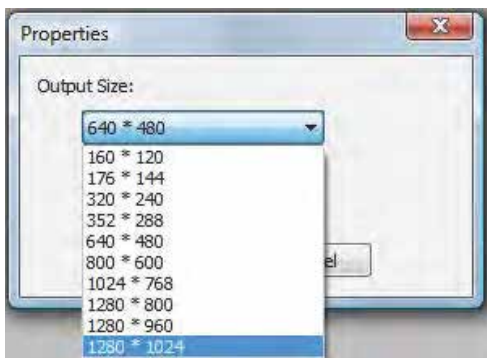
### For the best image capture results AMCap should be set as follows;

Go to **Options > Video Capture Filter** on the AMCap interface and set the slider bars as follows.



The settings above are subject dependent, but are good for most scenarios. The most important settings are *Exposure*, *Contrast*, *Gamma* and *Gain* so ensure these are set as above.

Also, to get the best out of the camera set the image capture resolution as high as possible. You can set this independently from live resolution so that the live image feed is still smooth. Set image capture by selecting **Options > Still Capture Pin** and selecting the max resolution (1280 x 1024), as below left;



To ensure the live feed remains smooth set the video resolution by selecting **Options > Video Capture Pin** and set the resolution to 640 x 480 as above right.